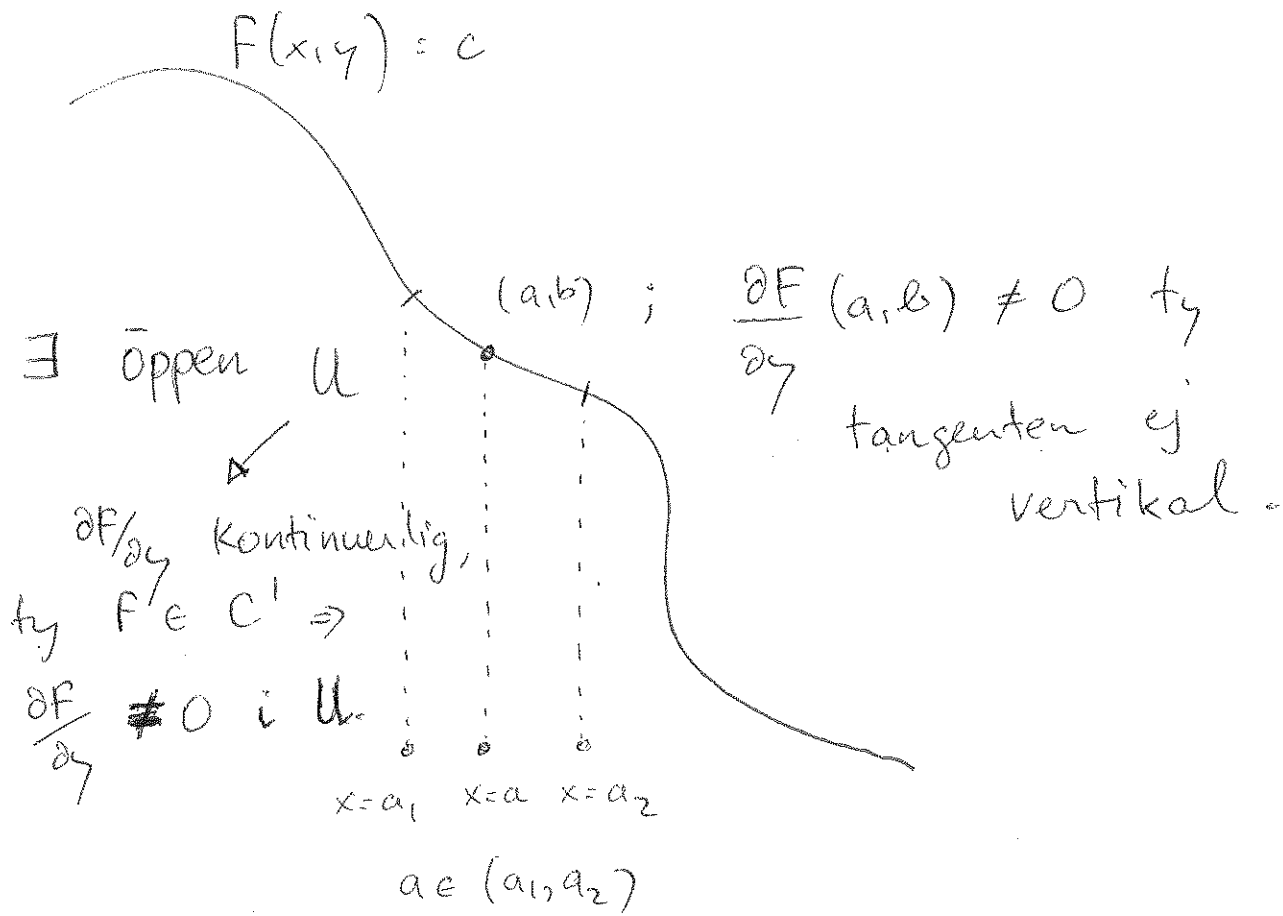


Implicita funktionsatsen i \mathbb{R}^2

$$F(x, y) = c$$



$\pi: \mathbb{R}^2 \rightarrow \mathbb{R}$ projektion på x -axeln

$$\pi(U) = [a_1, a_2]$$

$$y = f(x) \text{ för } x \in (a_1, a_2)$$

$$F(x, f(x)) = c$$

Kedjeregeln \Rightarrow

$$f'(x) = - \frac{\partial F / \partial x}{\partial F / \partial y} \Big|_{(x, f(x))} \quad \forall x \in (a_1, a_2)$$