

Statistical Image Analysis

Lecture 6: Image segmentation

David Bolin
University of Gothenburg

Gothenburg
April 18, 2018



Intensity-based thresholding

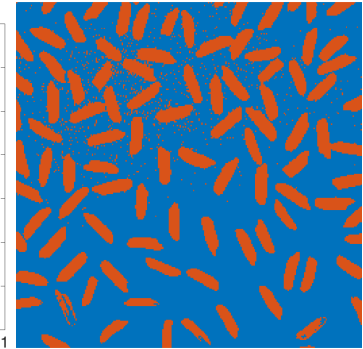
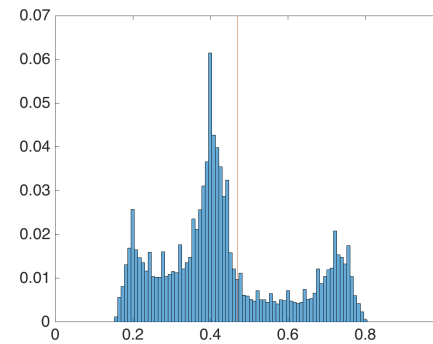
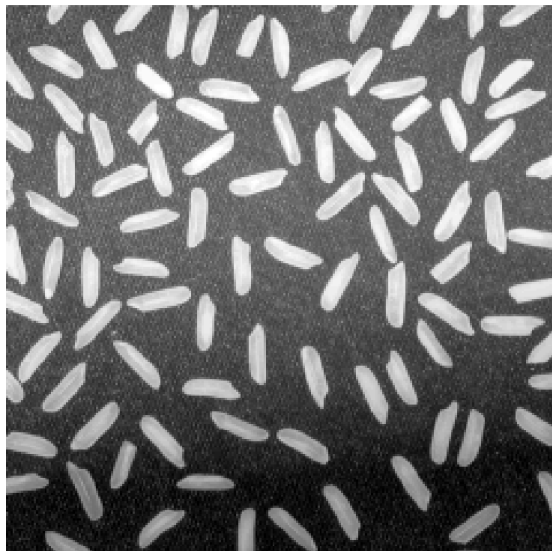
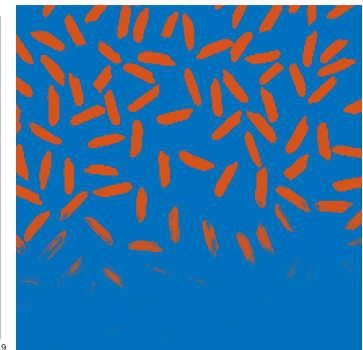
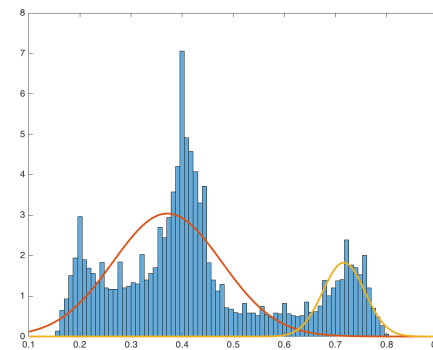


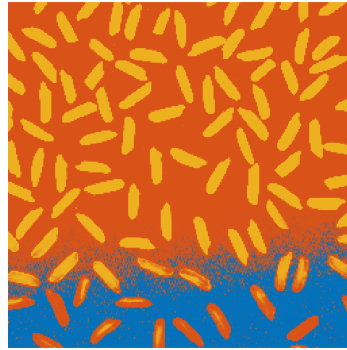
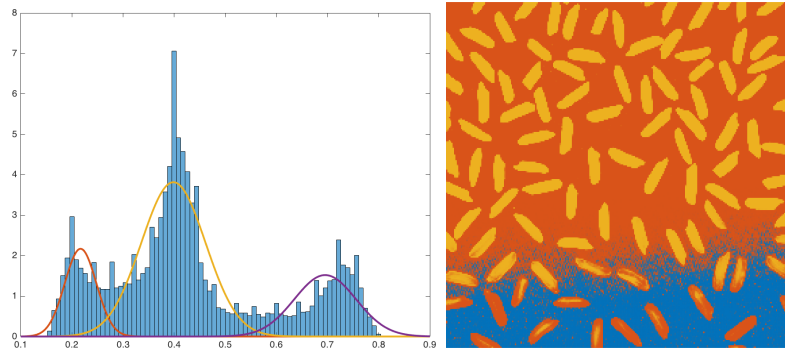
Image classification



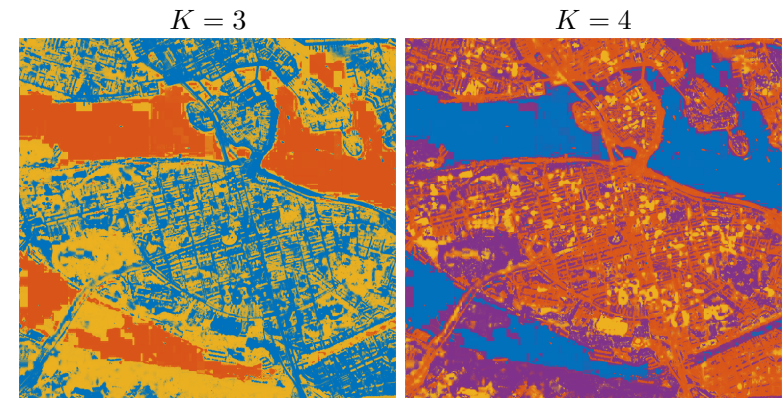
GMM with $K = 2$



GMM with $K = 3$



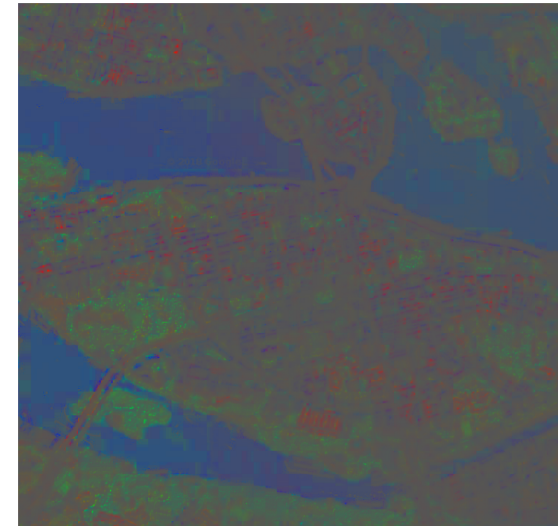
RGB classification



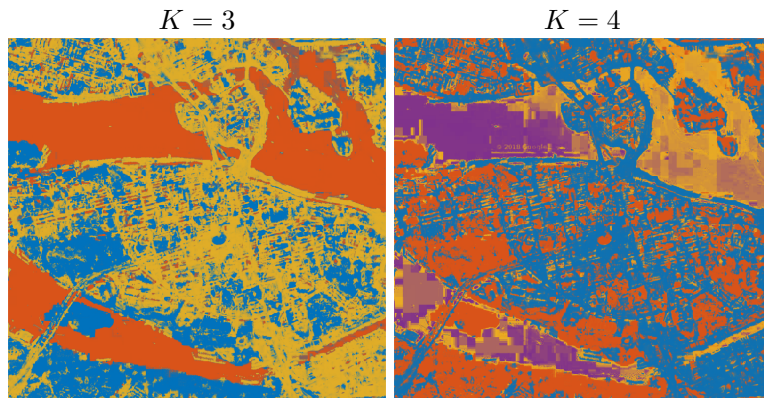
Classification using colors



Relative colors



Classification using relative amount of green and blue



K-means vs general GMMs

